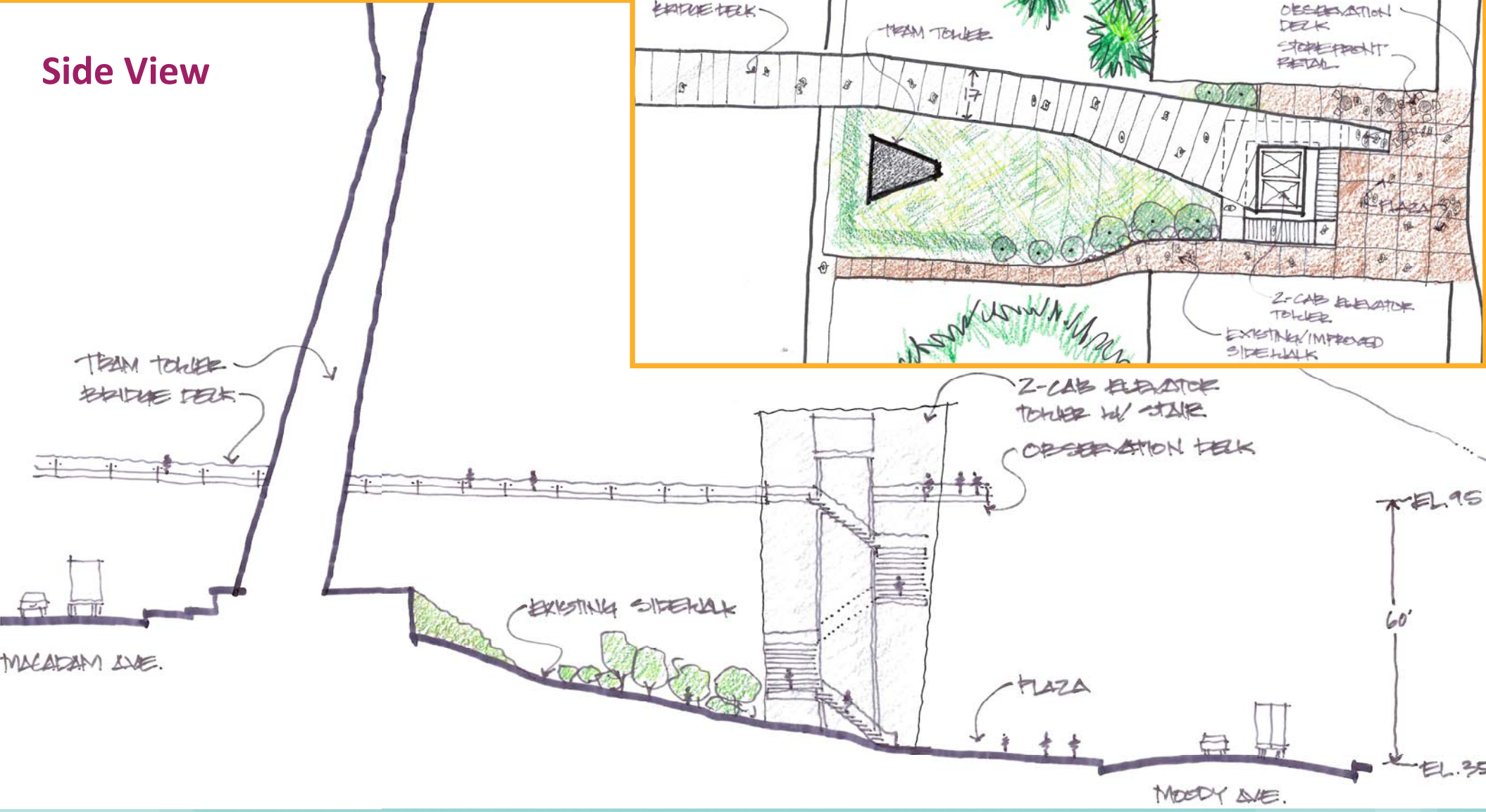


East Landing Options

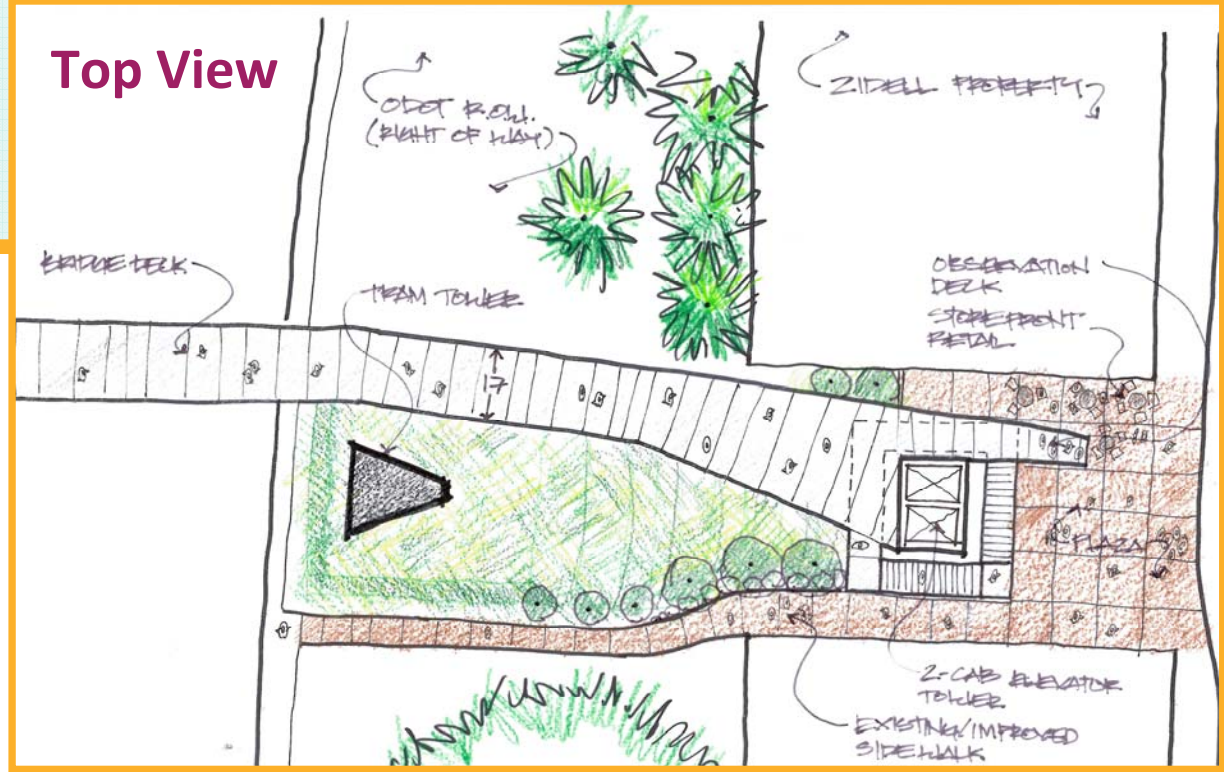
- Stairs and elevator will be used to connect east end of the bridge to Moody Avenue.
- The end of the bridge is 60 feet above Moody Avenue.
- There will be two oversized elevator cabs that will allow bikes to “pull through.”
- The elevator tower will include an observation area.
- Both options will include a hardscape area at Gibbs Street.
- The free standing stair option would likely cost more.

East Landing – A

Side View

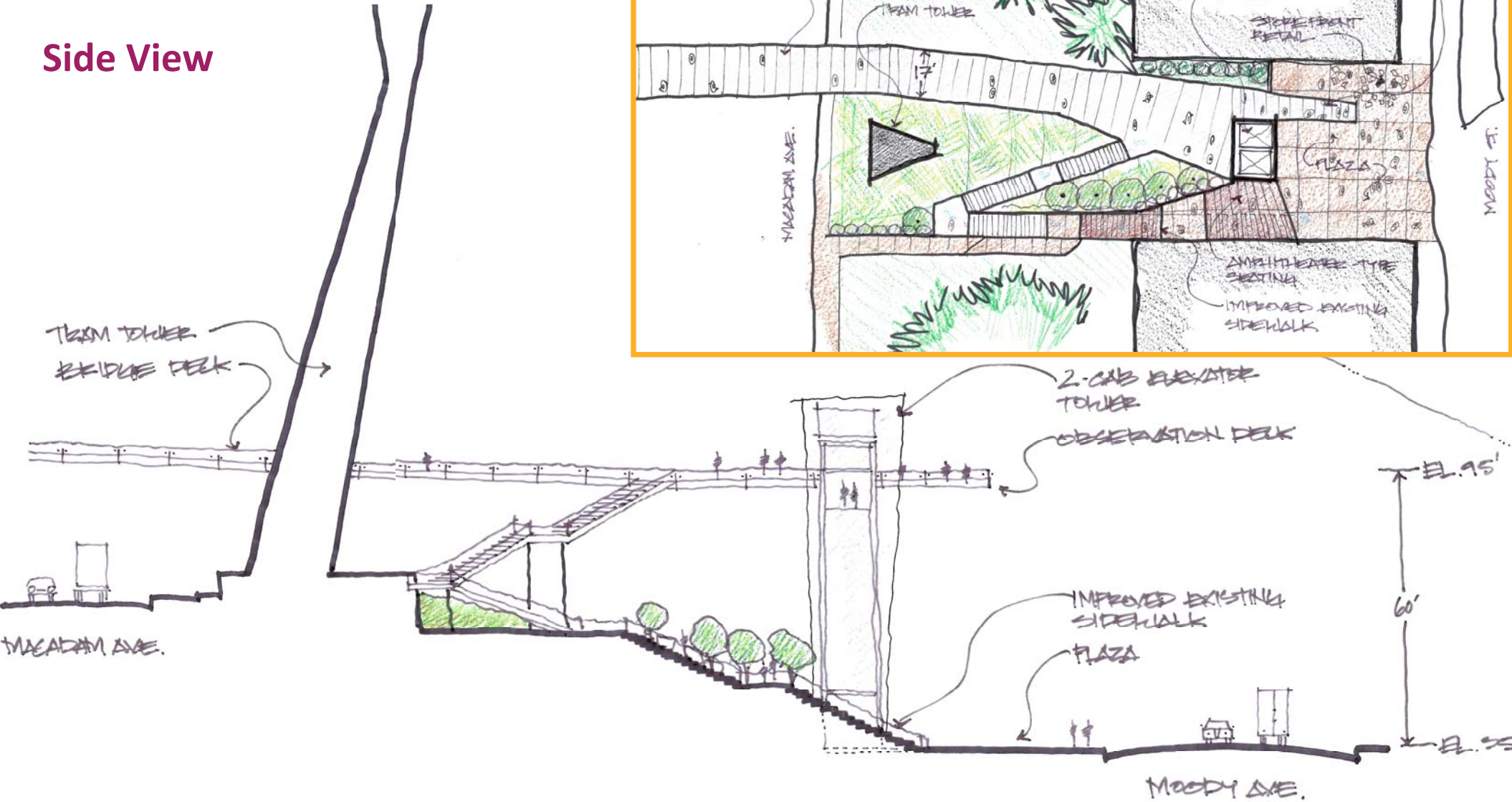


Top View

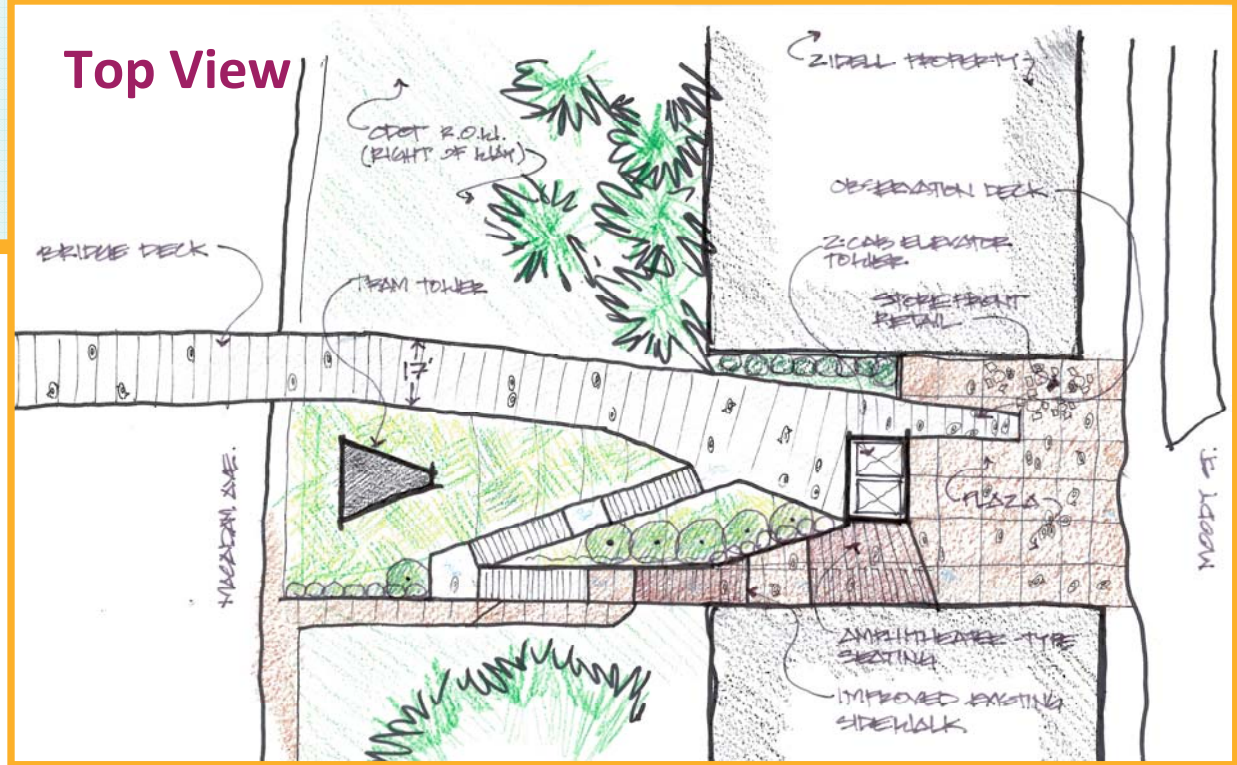


East Landing - B

Side View



Top View



West Landing

Top View

